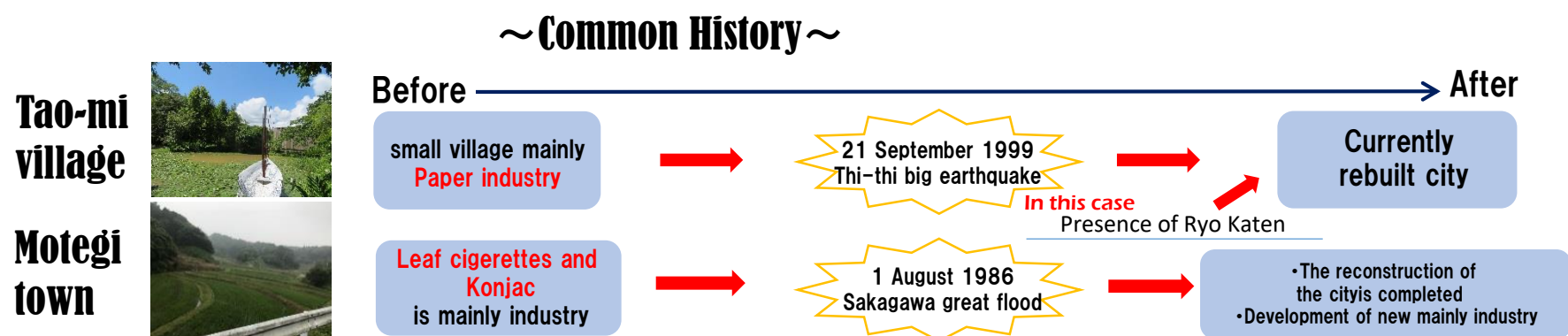




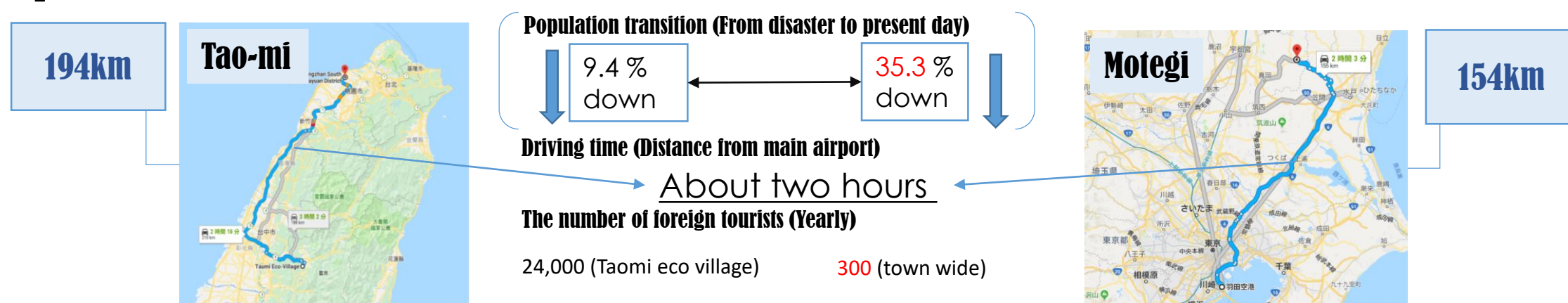
# The Revitalization of Satoyama (agricultural mountain) areas in EAST Asia : A case study of Tao-mi village and Motegi town

## 1 Motivation for research

Recently, Satoyama areas suffering from depopulation is a serious problem. Motegi town in Tochigi is one of them. So we focused on Taomi-village Puli-town in Taiwan which has similarities in two points : having Satoyama and experiencing reconstruction from disaster. We started research to find out steps and systems of revival by comparing these.



## 2 Comparison of two areas



So what is causing such a **difference** between Tao-mi and Motegi ?

## 3 Field Work

1) Discussion with Ryo Katen

### Who is Ryo Katen?



**Key person to development of Taomi**  
 - After the disaster he investigated ecosystem cooperating with external organization  
 - Creation of knowledge economy.

Establishment of **Tao-mi eco village**

### Taomi village in Taiwan

2) Commentary and Discussion with Ecological commentator  
 Unique jobs of Tao-mi  
 Creating a more valuable industry by linking with knowledge rather than just utilizing nature



• Love of hometown  
 • Awareness of treasure of town is important (by Ryo Katen)



20 people are now

Awareness of treasures of town

3) To lodge at an inn  
 Discussion with Managers  
 It has unique management of inns providing with traditional food and land that made the best use of ecology. It is drawing attention from all over the world.



### Motegi town in Japan

VISIT  
 • Huminomori-Motegi  
 • Midorikan  
 • Michinoeki-Motegi



1) Activities based on residents  
 Various activities are carried out mainly by residents in cooperating with administration. ... The administration is the position to support the last.

2) Cooperating with administration and university  
 They regularly work with Utsunomiya University, and in collaboration with the outside, investigate the ecology of the town.

Rice Paddy owner system  
 13 town development council  
 Product development at Michinoeki-Motegi

Important Point

- Immediately after the 921 earthquake, they investigated the ecology. (=It lead to discovery treasure)
- It is to collaborate with universities and expert.
- Third, it is to change the awareness of Taomi residents.

Factor of activation

- Cooperation with local research institutes (=Cooperation with external organization)
- Residents understand their land well and do activities themselves

Conclusion

- Existence of **leader**
- Cooperation with **external organization**
- Love of the hometown
- Awareness of treasures of town
- Knowledge economy

## 4 Consideration

From the above, we guessed that the difference between Tao-mi and Motegi

- It can not make full use of the prosperity of rich nature.
- Development of a new major industry (Knowledge economy).

## 5 Proposal

- To Strengthen Knowledge economy by cooperating with outside.
- Residents' awareness reform and management of tourists resources based on autonomy.

Town development using nature  
 From steps ① and ②

## 6 Future prospects

To make the activation plan including 5 elements



To proposal to depopulation areas as example

Already suggested in **Motegi**



To increase model cases preferring to other developed areas.

