

# TIME IS MONEY

OKIDOZEN SENIOIR HIGH SCHOOL

IITSUKA MIU, KOTOU YUICHI, MUTOU ANNA, NOGUCHI U CHODEY

- Ama town is one of the islands inside Oki-Dozen in Shimane prefecture
- We focused on searching the problems in our local community



## Problem

There are only 3 ferries per day to travel from Ama to mainland. The last ferry is at 3:15pm. Travellers are free after lunch on their day of departure (almost two hours). So Ama Tourist Center had some complains from travellers about how to spend their free time in Ama. Therefore, we focused to solve this problem.



## ACTIVITY

1. Discussed what to put in the leaflet
2. We went to check the places
3. We got permission from the owner of the place
4. We started making the survey and the leaflet
5. We kept it for two weeks during summer vacation
6. Collected the Survey and totalized the result



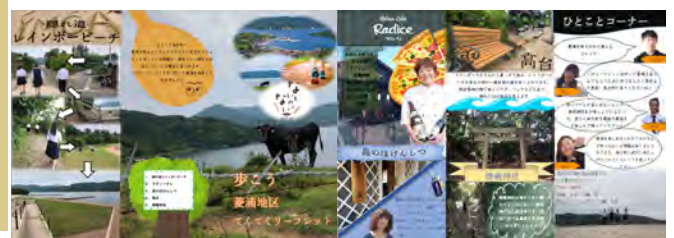
## INSIDE THE LEAFLET

### 1. Information about

- Beach
- Shrine
- Resting place
- Walking place

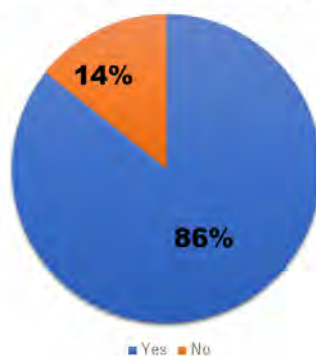
### 2. Comments form the owners & us

We mainly focused on places near to Hishiura port.



## RESULTS

### Was the leaflet useful?



### Comments

#### Good

- It was useful and helpful
- It was colourful
- Image was clear

#### Bad

- Had difficulties in where to read first