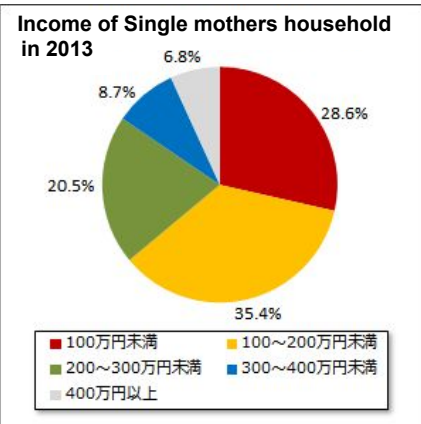


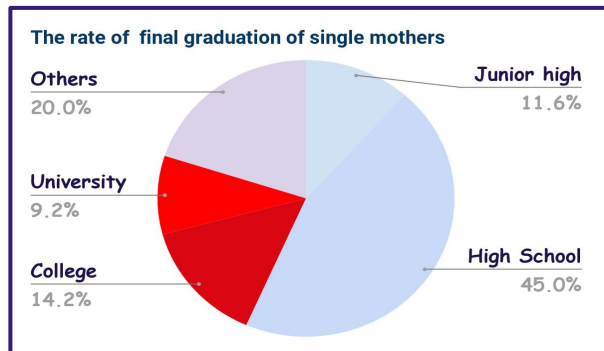
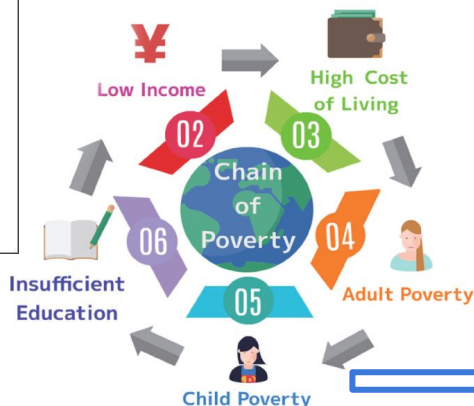
Senior citizens can support the youth to escape from relative poverty

OVERVIEW



Relative Poverty Line : **¥ 1.65 million (2018)**

the rate of single mothers who go to universities is **23.4 %**, while the average of all women in Japan reaches **57%**.



THE WEAKEST in vicious circle of relative poverty

ACTION PLAN : New NPO for high school students

Establishing **educational NPOs** that support high school students to go to higher education: collaborating with local community

1. Providing students with a meal even at night time by collaborating with companies
2. Making a significant class by convening retired professors and students interning at universities

Merits for retired teachers

- time
- experience



Food provided by FoodBank

Free cram school

Interview: Advice from other NPOs

some students don't like teachers because of their experience



- Good and New idea
- ✓ Factors of high school students' poverty are different, so NPO should plan different schemes for each case.
- Customization for all is difficult

each single mother household has different situation.



CONCLUSION

- Our NPO we want to create has merit but still need some improvement.
- We have a responsibility to create a society where no one is left behind

References

NHK取材班(2018)、高校生ワーキングプア「見えない貧困」の真実、新潮社
 日本の子供の貧困に対する先行研究 内閣府
 厚生労働省 ひとり親世帯等調査結果報告
 OECD Labour Force Staistics
 全国母子世帯等調査
 働き方の 男女不平等理論と実証分析
 日本の子ども、6人に1人が「貧困」
<http://xn--u9j8a7iyad9u8cwo8d7835d.blogspot.com/2014/09/hinkonritu.html>