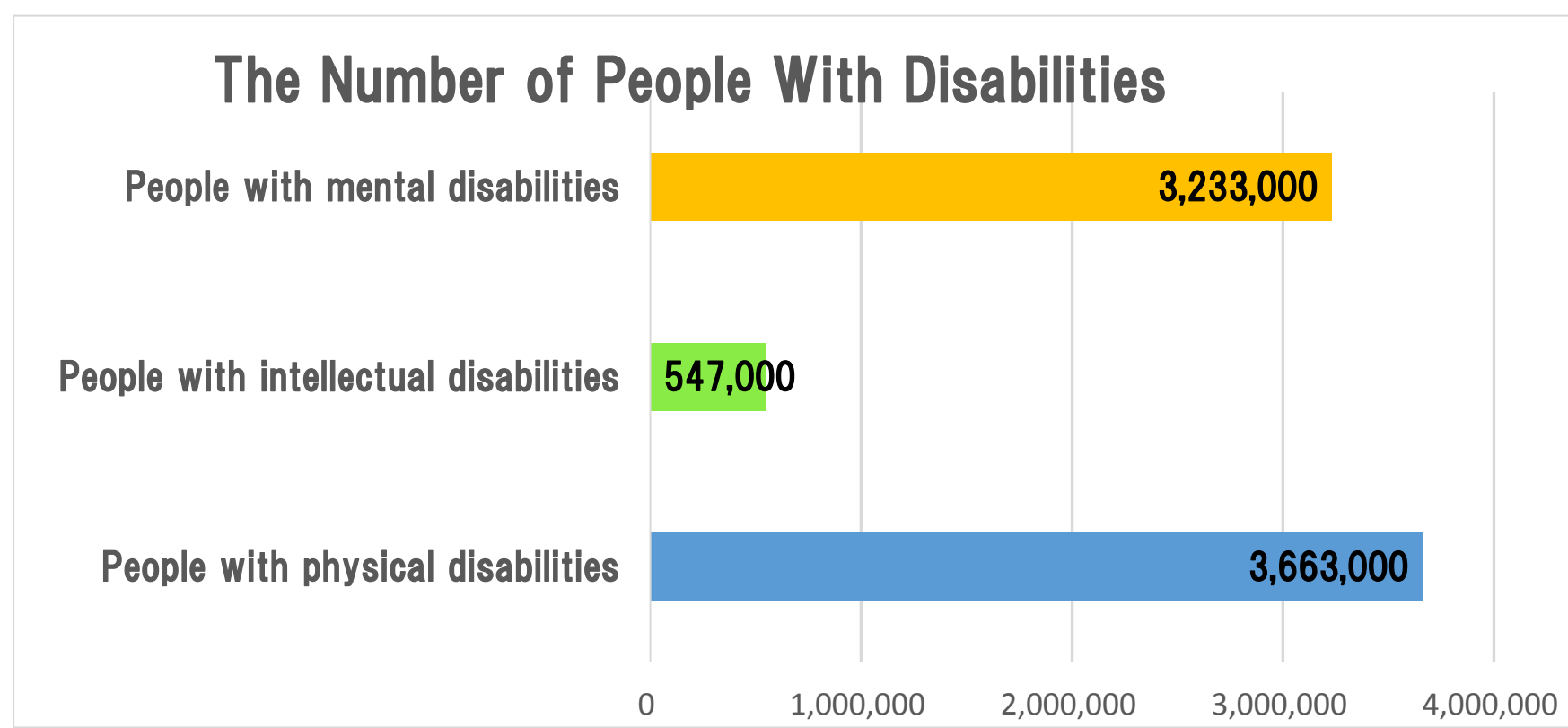


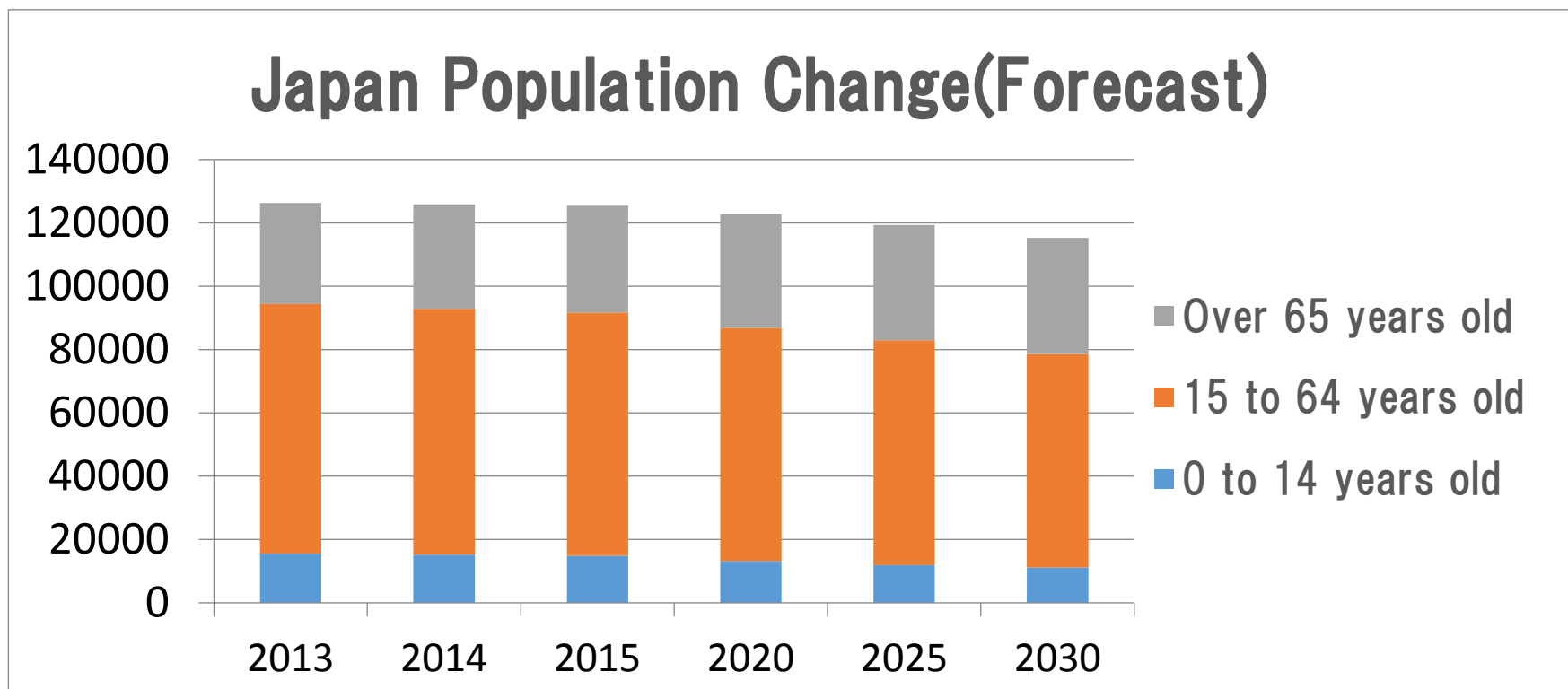
Contributing to local and global community through NIKKEI Stock League

1. Current status



The number of people with mental disabilities is about as much as the people with physical

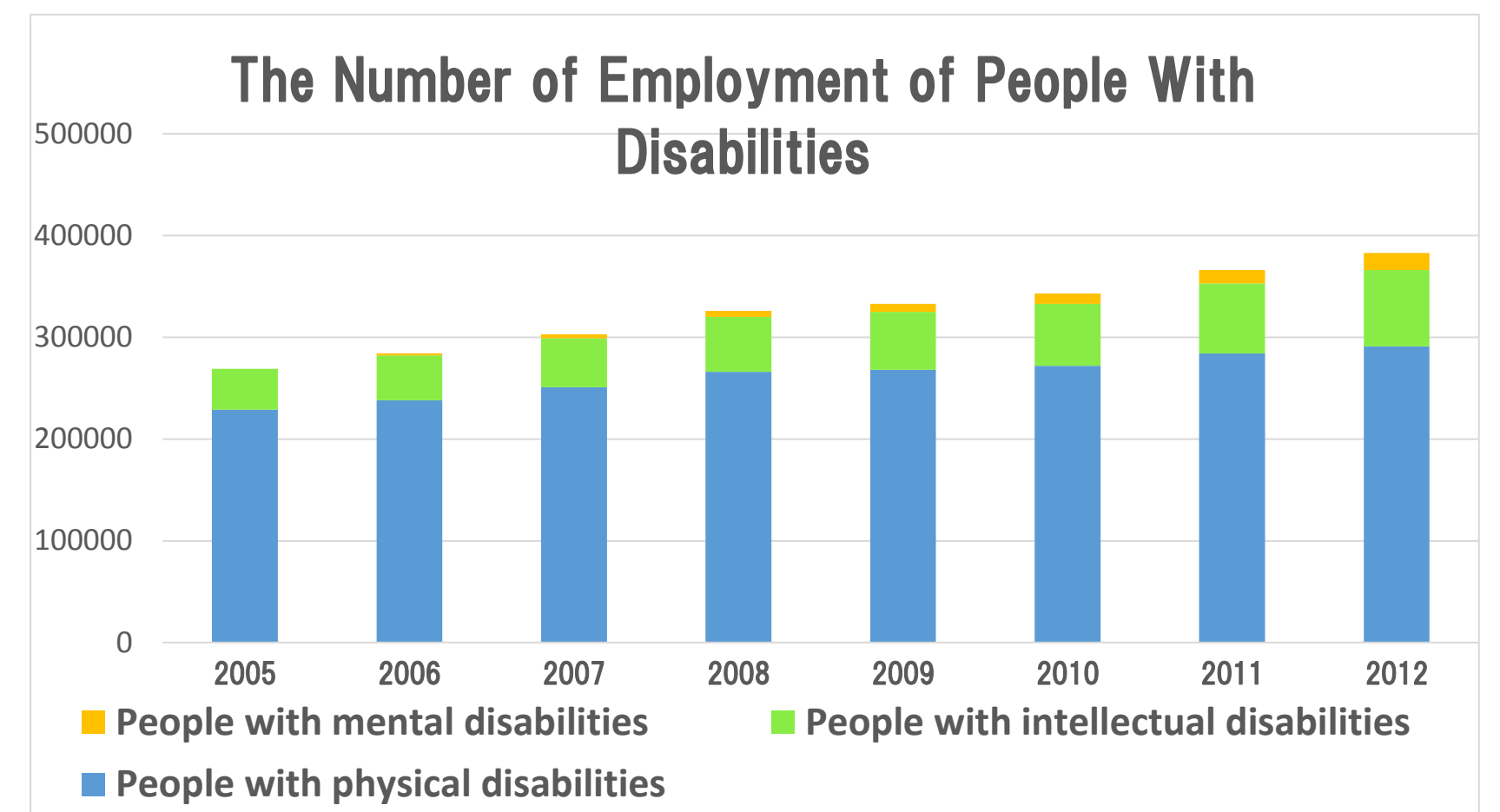
However, the number of with mental disabilities who are



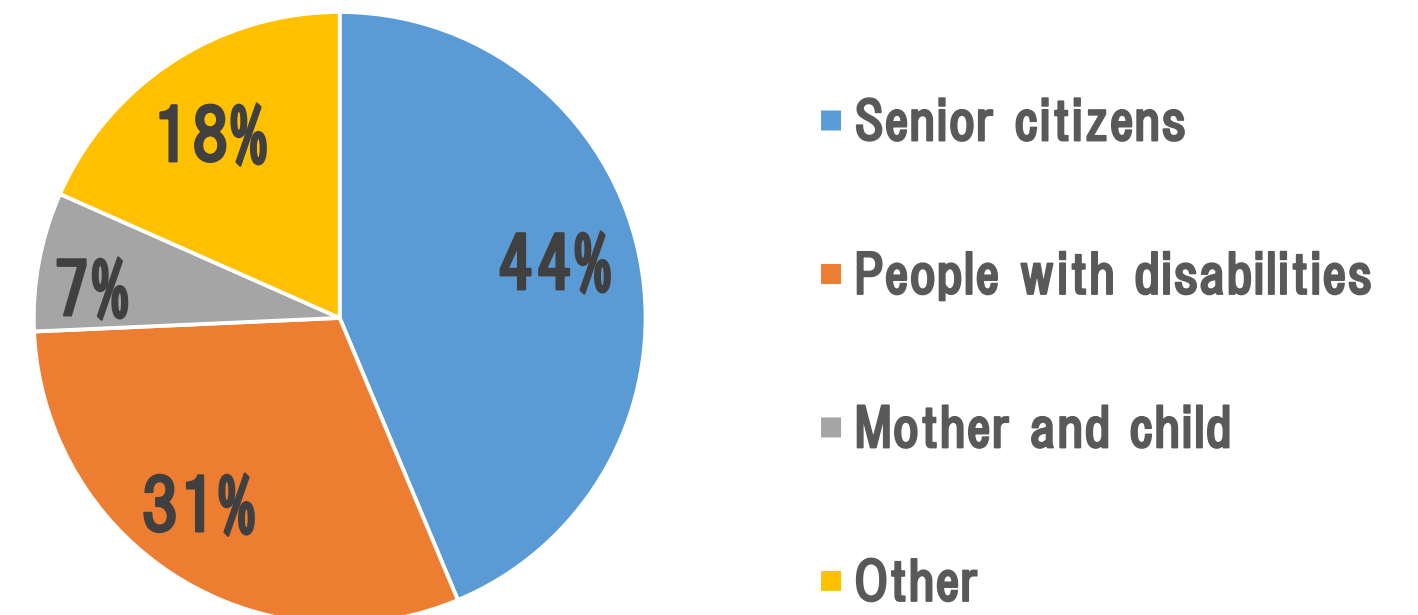
Work force population is in decline.

31% of welfare recipients are people with mental disabilities.

Social problems related to employment



Number of people receiving welfare protection



2. Why are people with mental disabilities not employed?

- <TYPE>
- Depression
 - Anxiety Disorders
 - Schizophrenia
 - Drug dependence
 - Learning disability
 - Autism spectrum
 - Attention-Deficit Hyperactivity Disorder



3. How to solve this problem

Sports is the best way!

- <EFFECT>
- ✓ Physical change → Be healthy, Increase appetite
 - ✓ Mental change → Be confident, Be able to concentrate, Become ambitious
 - ✓ Lifestyle change → More interaction with people, Able to return to society

If we recommend sports for people with mental disabilities, it would be possible to realize social reintegration of them, and the

BUT... What can we high school student do?

↳ **Investment**

NIKKEI Stock League (Efforts to think about solving social problems through investment)

<How to choose companies to invest in>

From listed companies---

- Companies that are sponsors of the Japanese Para-Sports Associate
- Employment rate of people with disabilities is 2.0% or more
- Companies with special subsidiaries

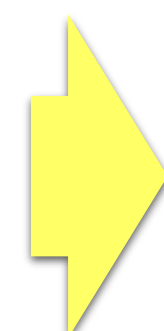
<EXAMPLES>



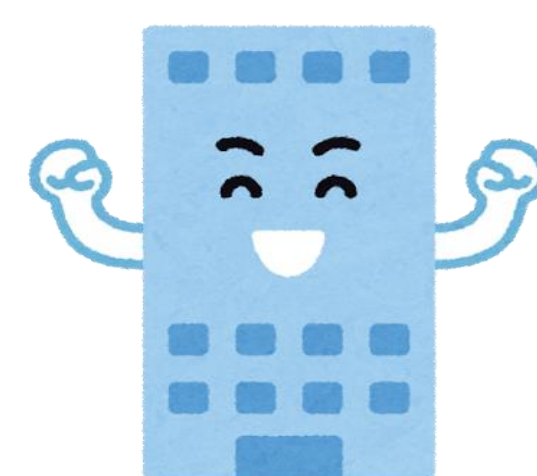
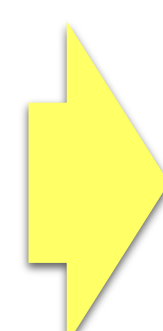
4. Future



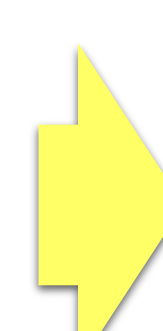
Become a society where people with disabilities can play an active part



Everyone can continue to work and play an active role



Result, employee motivation increases



The company will be profitable and the Japan economy will be enriched