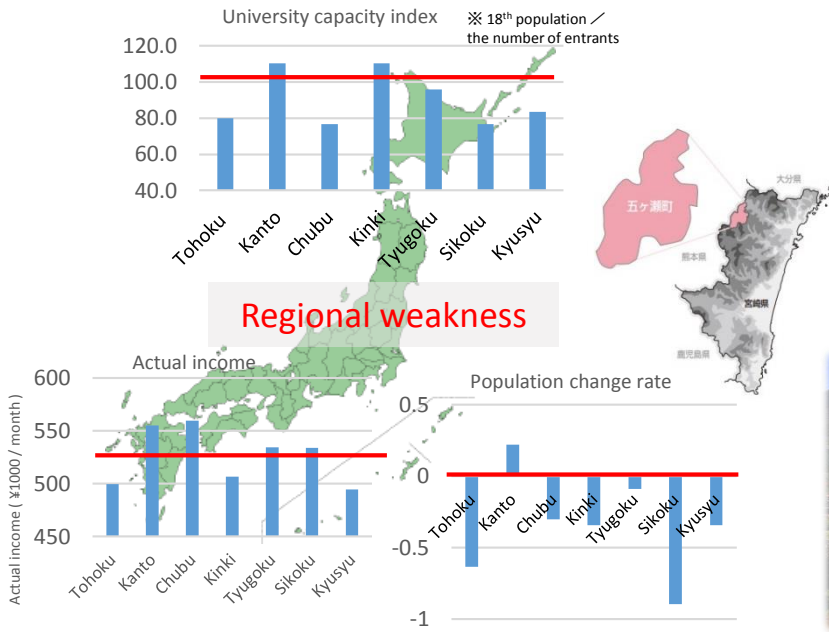


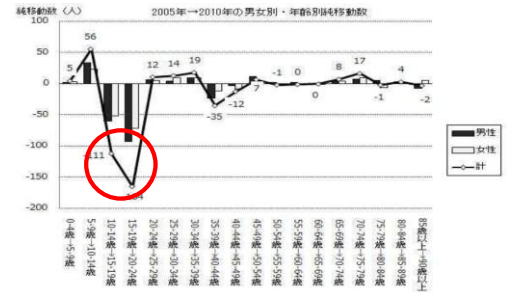
# Zero Juku

-Focusing on Inter-regional Disparities in Educational Opportunities and Economy-  
Gokase Secondary School (2656) Hidaka Nami

## I. Background



### [Gokase town Nishiisuki-gun Miyazaki]



From「五ヶ瀬町人口ビジョン」

### Profile of Gokase town

- Located in the mountainous region of Miyazaki Pref. (forest area: 88%)
- Population 4,812 (aging percentage 39%)
- Main industry is agriculture
- 4 elementary schools, and 1 junior high school

Local × Potential of education

### Okinokuni-learning center ( in Ama town, Shimane prefecture : an isolated island which has about 2,300 population )

Students have limited choices for learning, and going to *juku*(cram school) is very difficult. This learning center was established with these belief ;“Until the time our children graduate from high school, they should be educated in our town” and “Cultivating Glocal people/resources”.

#### ➤ The results of interview to staff in Oki

- The changes of students' study habits
- Students' comfortable place in after school
- Broaden students' awareness/viewpoint
- Increased Interaction inside/outside of the town

#### Fruits

#### ➤ The results of questionnaire to students in Oki

##### 【Impression】

- Can listen to many persons' lecture
- Place where we can do what we can't do
- Pleasant and relaxing place

##### 【Ability they got】

- Communicative competence
- Problem-solving ability
- Presentation skills



This is a place for children to assemble and learn in the community, and to connect the inside and outside of this town.

#### • Integrating with school education

- Gap of goal between local gov. and parents

#### Problems

Solve the problem × Viewpoints from high school students

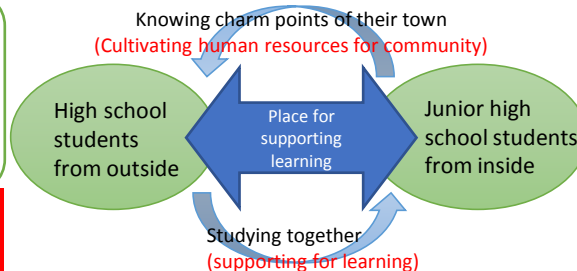
## II. Outline

### 【The goal of my research】

Supporting for learning (children's needs)  
×  
Cultivating human resources for community (community's needs)

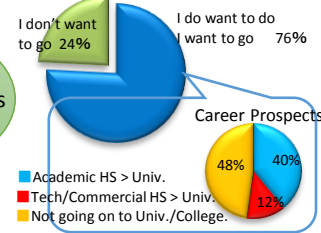
Making a model of "value of learning" from the local area.

### Gokase's unique "value of learning"



#### ➤ The result of the survey for Junior high school students' needs

Q. Do you want to go to cram school, if Gokase town has one?



### Reference

総務省統計局「政府統計の総合窓口」 <http://www.e-stat.go.jp/SG1/estat/List.do?bid=000001083999&cycode=0>  
宮崎県五ヶ瀬町「五ヶ瀬人口ビジョン」 [www.town.gokase.miyazaki.jp/](http://www.town.gokase.miyazaki.jp/) 隠岐國学習センター <http://www.oki-learningcenter.jp/>  
農林水産省「中山間地域とは」 [http://www.maff.go.jp/j/study/other/cyusan\\_siharai/matome/ref\\_data1.html](http://www.maff.go.jp/j/study/other/cyusan_siharai/matome/ref_data1.html)